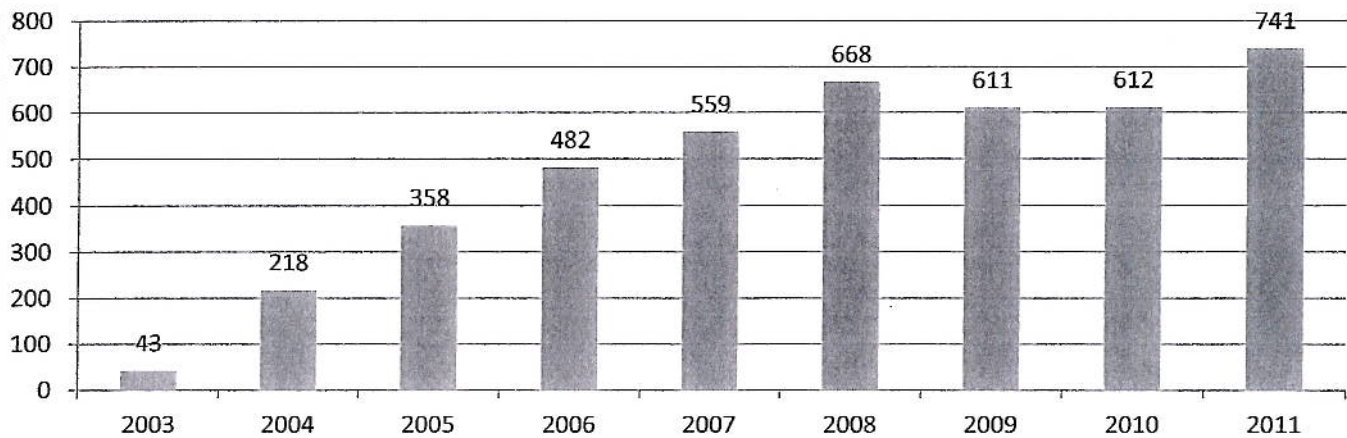
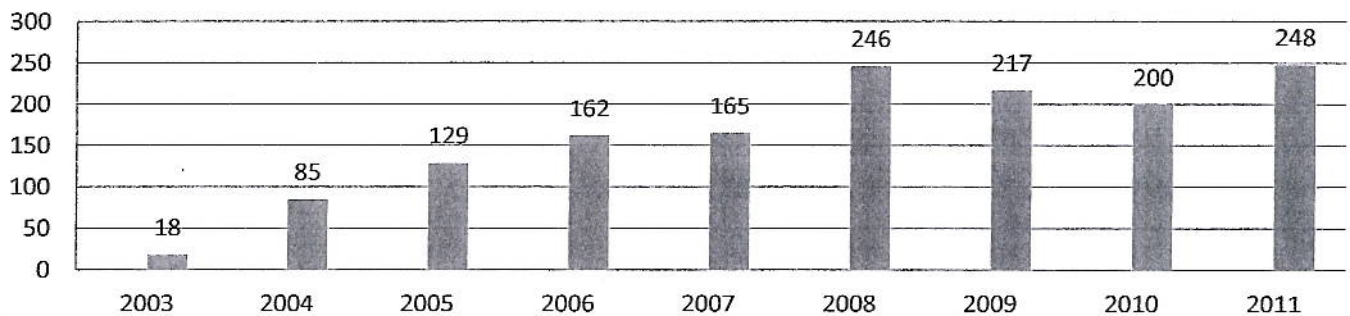


*Harmony House  
Statistics 2011*

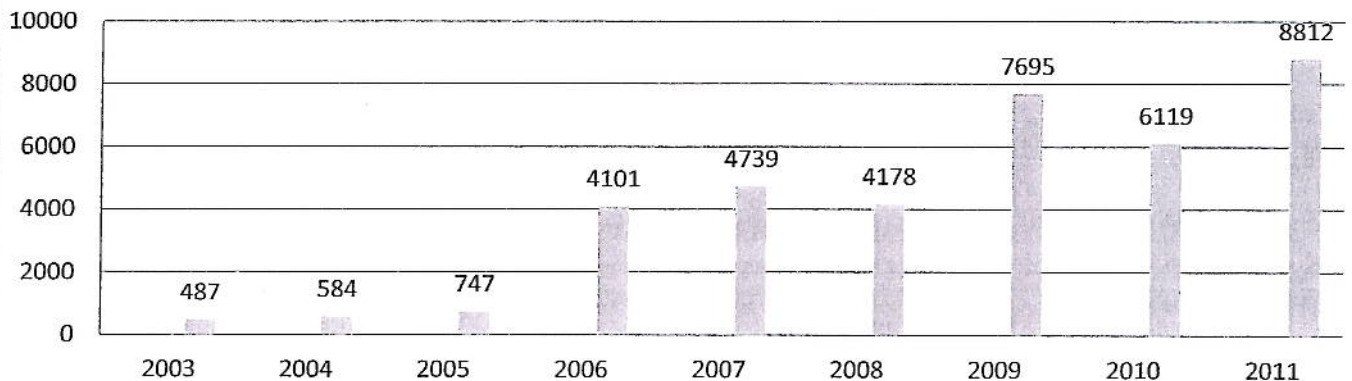
**Direct Services Clients**



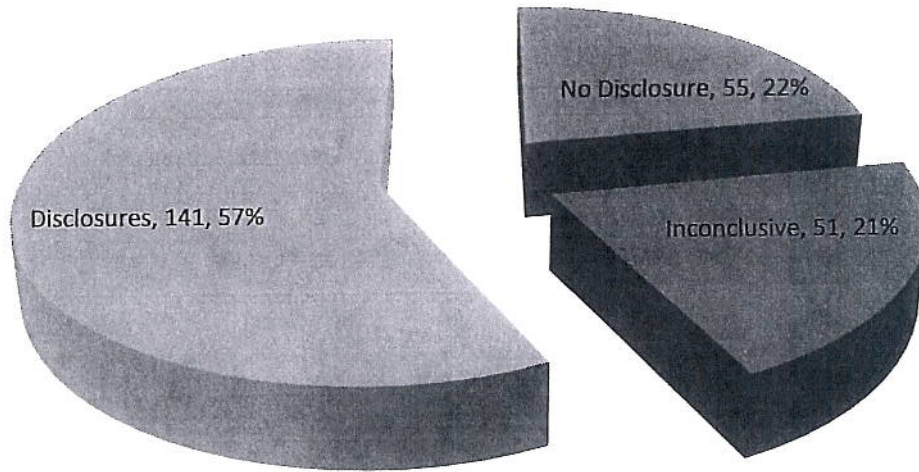
**Forensic Interviews Completed**



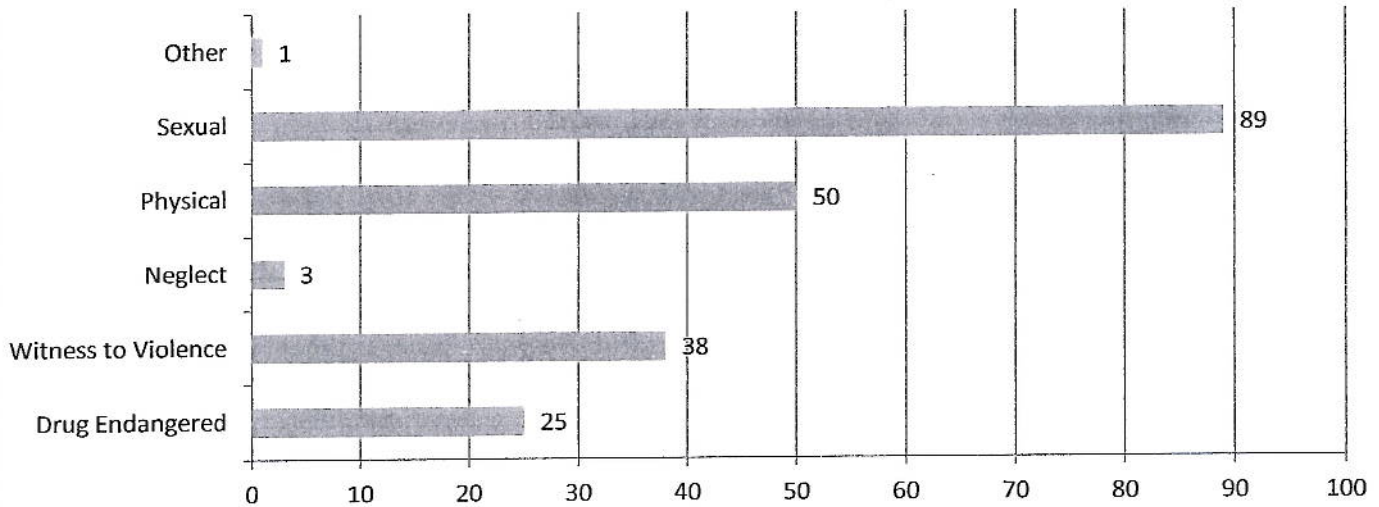
**Community Education Participants**



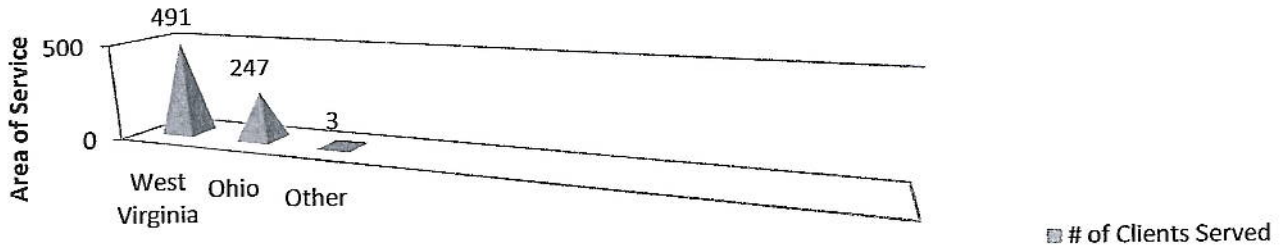
## 248 Forensic Interviews Completed - 2011



## Disclosures by Abuse Type (chart does reflect multiple types per client)



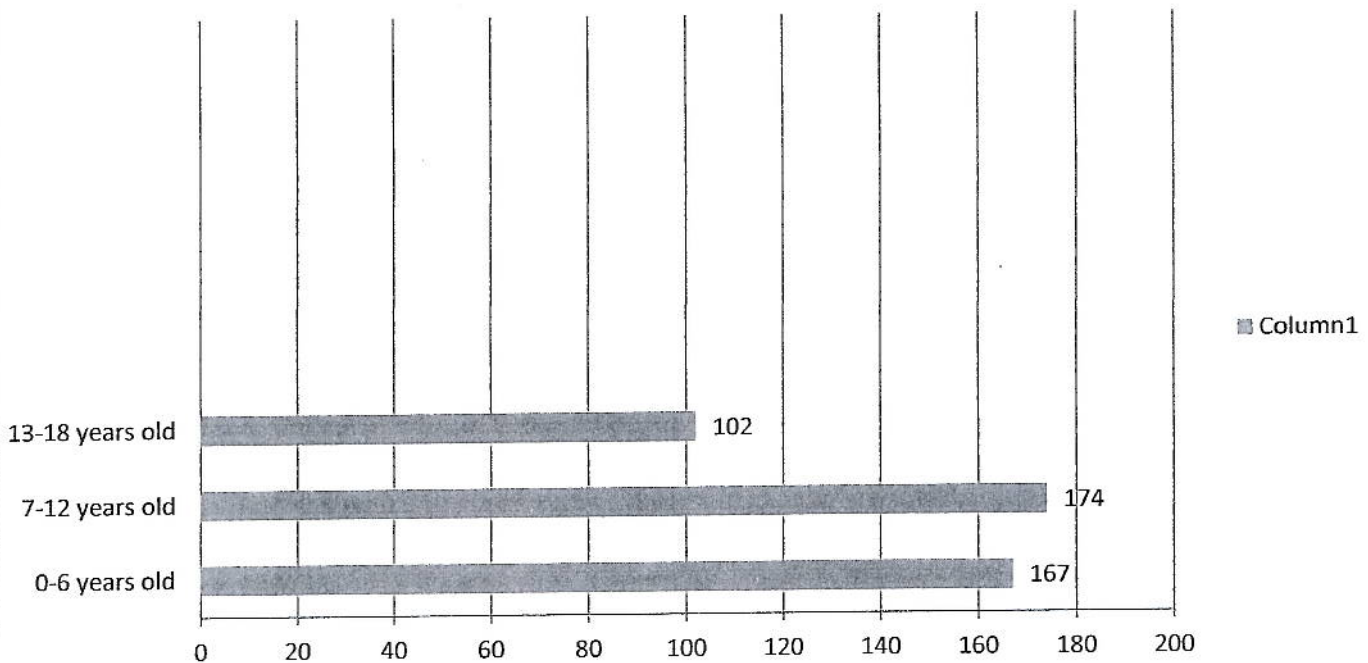
## Harmony House 2011 Clients Served by State - 741 Direct Service Clients



### 2011 # of children and # of Adults Served

Children	443
Adults	298

## Harmony House 2011 Ages of Children Served - Direct Services



**Gender of Children Served 2011**

Female 280...63%  
Male 163...37%

**Ages of Children Served 2011**

0-6 yr 167...38%  
7-12 yr 174...39%  
13-18 yr 102...23%

**Special Needs Served 2011 – 95**

ADD/ADHD.....38  
Autistic.....1  
Cerebral Palsy.....1  
Deaf/Hard of Hearing...3  
MR/DD.....22  
Speech Impediment...29  
Vision Impairment....1

**Race/Ethnicity of Children Served 2011**

White 399  
Black/AA 14  
Other 30

**Types of Alleged Abuse Reported 2011 (does reflect multiple abuse)**

Sexual 315  
Physical 58  
Neglect 11  
Witness to Violence 21  
Drug Endangered 16  
Other 28

**Medical Exams 2011 (due to the allegations)**

Coordinated/Referred by Harmony House - 85

**Number of Alleged Offenders & Relationship with Child**

Parent 76  
Step Parent 10  
Parent's Boy/Girl Friend 27  
Other Relatives 16  
Other Known Person 68  
Unknown 6  
Sibling/Step-sibling 12  
Grandparents 7  
Residential Caretaker 3

**Number and Type of Clients 2011**

Primary Children 413  
Secondary Children 30  
Primary Adults 27  
Secondary Adults 271

**Known Age of Alleged Offenders 2011**

Under 13 13  
13-17 27  
18+ 172  
Unknown 3

**Criminal Outcomes 2011**

(criminal outcomes are related to safety issues of the alleged child victim and the community at large)

Convictions by Trial 5  
Convictions by Plea 18  
Acquittals 1  
Charges Dropped 12

**Child Abuse & Neglect Outcomes 2011 (outcomes are related to safety issues of the alleged child victim)**

Unfounded/Ruled Out 46  
Founded/Reason to Believe 22  
Unable to Determine 1  
Administrative Closure 0  
Moved 0  
Other 1

**Therapy 2011**

Referral to Therapy 60  
Counseling Sessions Scheduled 132