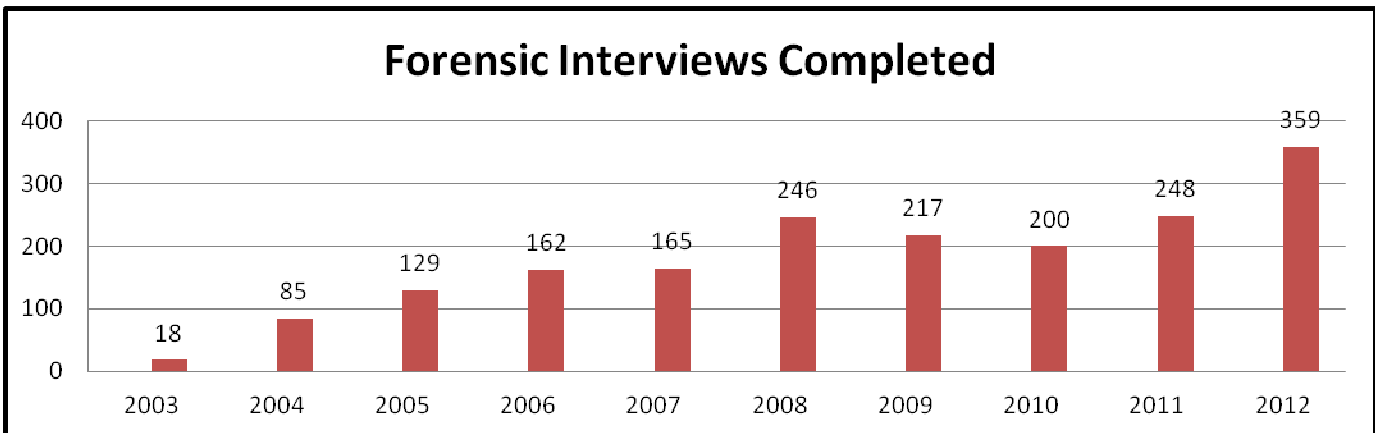
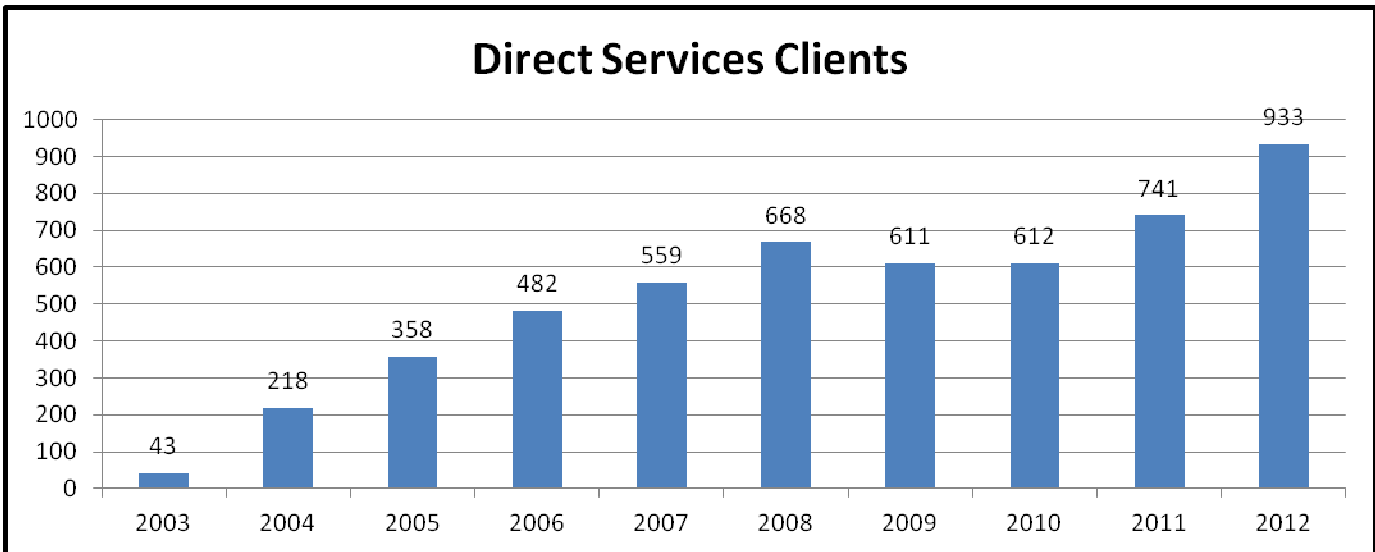
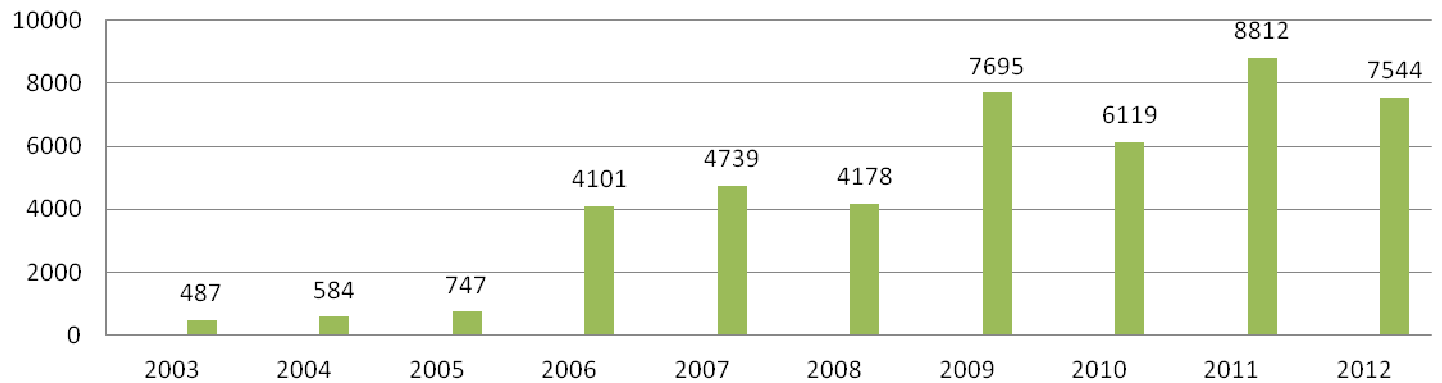


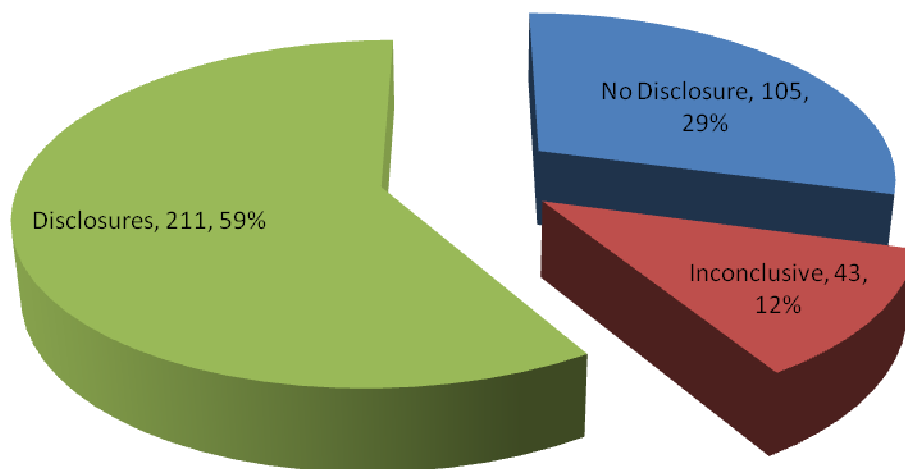
*Harmony House  
Statistics 2012*



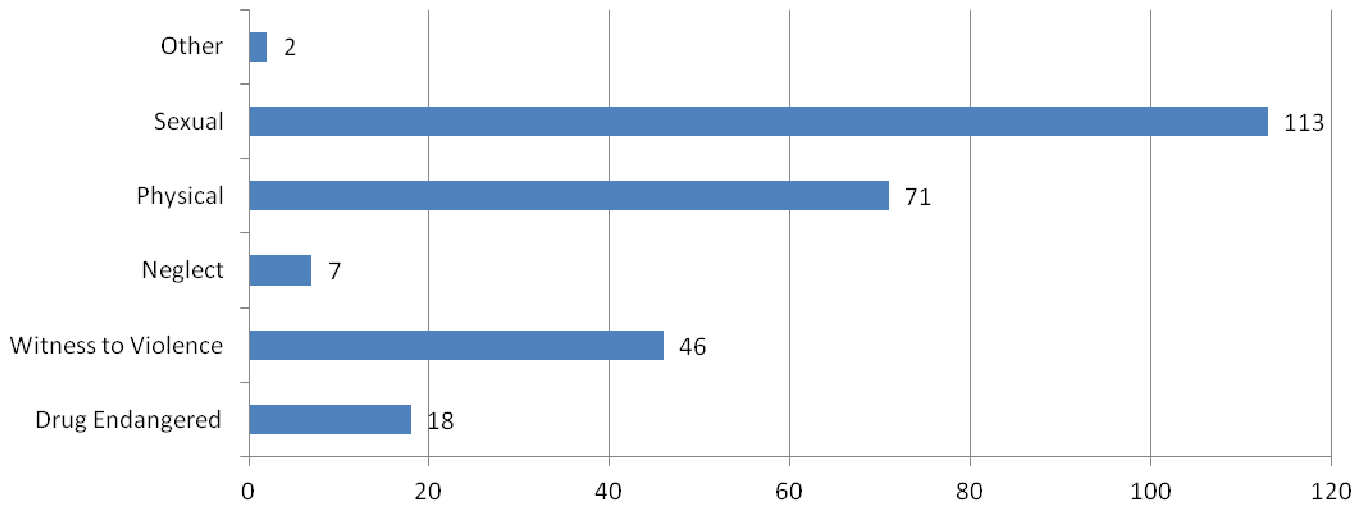
## Community Education Participants



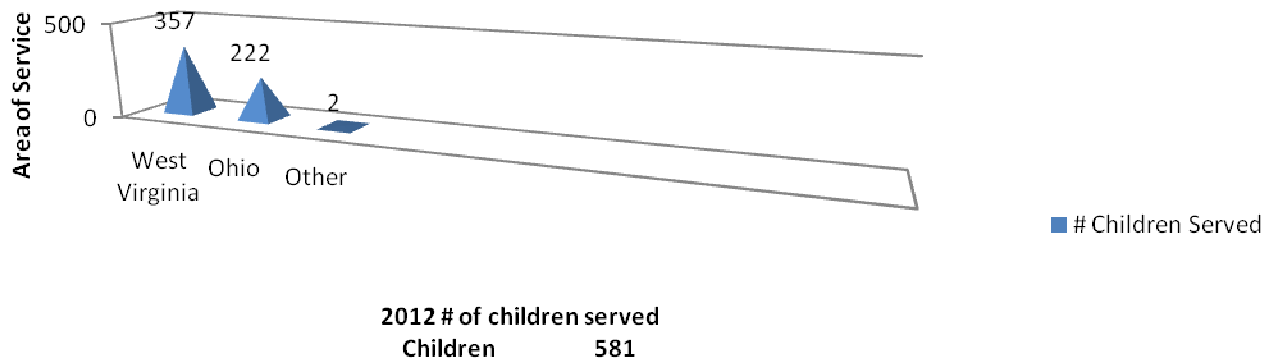
## 359 Forensic Interviews Completed - 2012



### Disclosures by Abuse Type (chart does reflect multiple types per client)

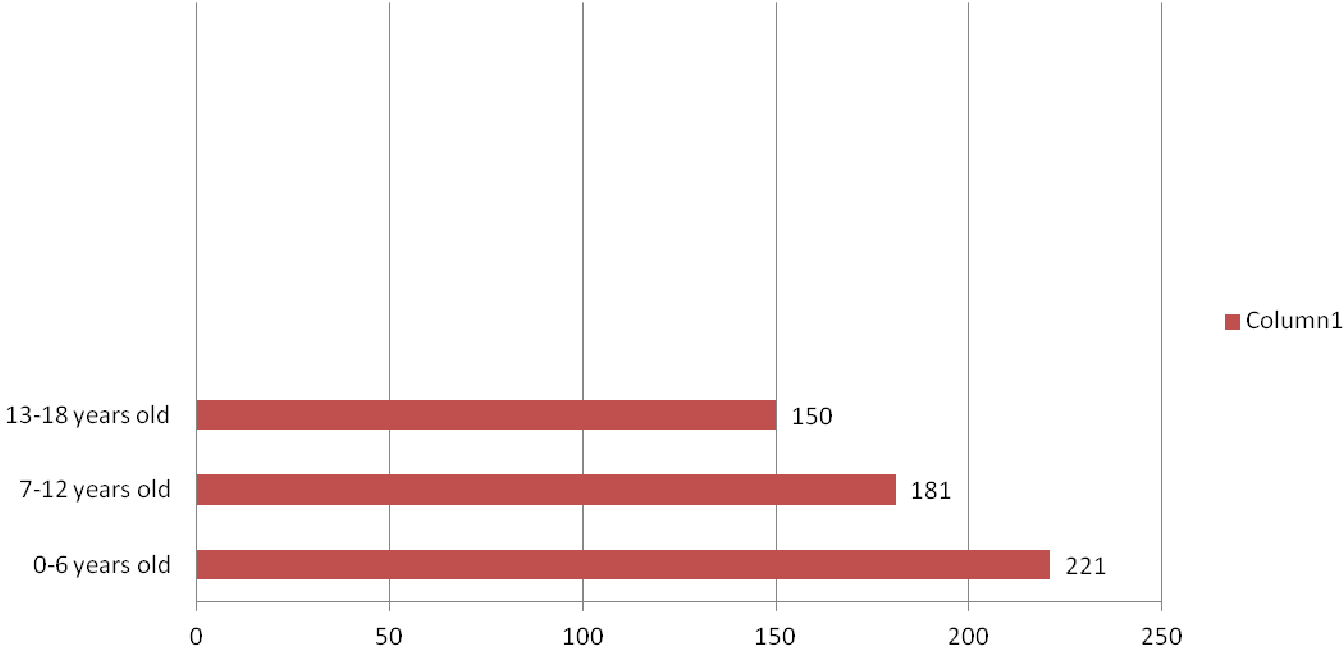


### Harmony House 2012 Children Served by State



# Harmony House 2012

## Ages of Primary Children Served - Direct Services



**Gender of Primary Children Served 2012**

Female 342...62%  
Male 210...38%

**Ages of Children Served 2012**

0-6 yr 221...40%  
7-12 yr 181...33%  
13-18 yr 150...27%

**Special Needs Served 2012-129 Clients**

ADD/ADHD. . . . .40  
Autistic. . . . . 4  
Cerebral Palsy. . . . . 1  
Deaf/Hard of Hearing. . . 4  
MR/DD. . . . .33  
Speech Impediment. . . 45  
Vision Impairment. . . . 2

**Race/Ethnicity of Primary Children Served 2012**

White 500...90.6%  
Black/A 19...3.4%  
Hispanic/latino 2... .4%  
Other 31...5.6%

**Types of Alleged Abuse Reported 2012 (does reflect multiple abuse)**

Sexual 393  
Physical 91  
Neglect 16  
Witness to Violence 38  
Drug Endangered 29  
Other 53

**Medical Exams 2012 (due to the allegations)**

Coordinated/Referred by Harmony House - 87

**Number and Type of Clients 2012**

Primary Children 552  
Secondary Children 29  
Primary Adults 32  
Secondary Adults 320

**Number of Alleged Offenders & Relationship with Child**

Parent 92  
Step Parent 20  
Parent's Boy/Girl Friend 32  
Other Relatives 32  
Other Known Person 86  
Unknown/Stranger 14  
Sibling/Step-sibling 11  
Grandparents 11  
Residential Caretaker 1  
Foster Parent 3

**Known Age of Alleged Offenders 2012**

Under 13 15  
13-18 32  
19+ 241  
Unknown 1

**Criminal Outcomes 2012  
(criminal outcomes are related to safety issues of the alleged child victim and the community at large)**

Convictions by Trial 1  
Convictions by Plea 25  
Acquittals 0  
Charges Dropped 9

**Child Abuse & Neglect Outcomes 2012  
(outcomes are related to safety issues of the alleged child victim)**

Unfounded/Ruled Out 96  
Founded/Reason to Believe 40  
Unable to Determine 3  
Administrative Closure 0  
Moved 0  
Other 0

**Therapy 2012**

Referral to Therapy 169  
Counseling Sessions Scheduled 166